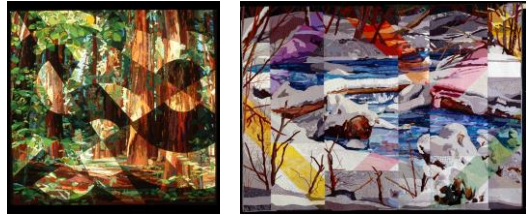


Alegre Retreat 2018

Katie Pasquini Masopust Fractured Landscapes



Fractured Landscapes (all levels)

Create a beautiful landscape using a photo of a “special place.” Find your personal, stylized version of reality. Fracture the finished drawing to create different shapes for color choices and add a surrealistic quality. Work with a stabilizer or foundation, blind machine applique, machine satin/straight quilting in a quilt-as-you-go format. Easy techniques that create a complex looking landscape.

(Materials fee: none)

Supply List

Tracing Paper, Pencil, Ruler, Compass, Scissors: paper & fabric, Masking tape and Scotch tape, Threads to match fabrics, Monofilament thread, Pencils for marking on fabric, Pins Spray starch, Black MICHRON 01 Pen, Sewing machine zig-zag, Iron and ironing surface, Extension Cord, Glue stick, Wash cloth.

These things will be available to use or purchase in class:
Stiletto, Matt Acetate, Sulky totally stable, template material, spray adhesive.

Ideas: Bring an 8”x10” Photo of landscape or a photo from a magazine, book or calendar. This will be what you will use to create the landscape drawing part of the quilt. If you can’t get an 8” x 10” of your photo use a good color Xerox to enlarge it, only as a last resort and only if they can do a good clear reproduction.

Fabrics: Bring fabrics that relate to the photograph or picture. Sort your fabrics into 7 separate steps, step 1 being white and very pale shades and step 7 being black and very dark shades of all of the colors in your photo. Steps 2 thru 6 are gradations in-between. Have several fabrics of each color in each step.

The Fractured Landscape book is available from Katie Pasquini Masopust
Call or email.

Katie Pasquini Masopust | katie@katiepm.com | www.katiepm.com

**Alegre Retreat 2018 - For additional information or to register, please call:
970-931-2647 or email: info@alegreretreat.com or katie@katiepm.com**